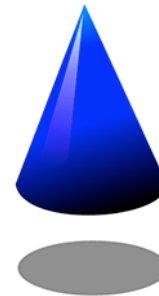
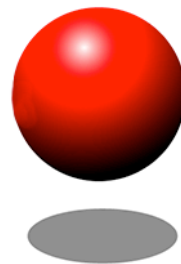
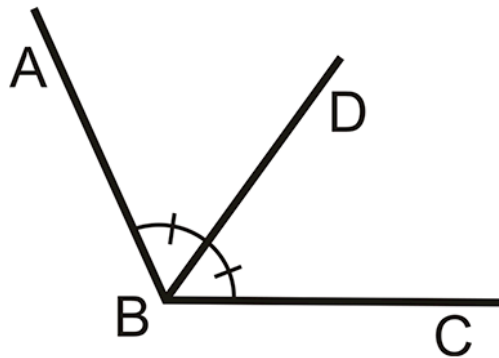


Geometry

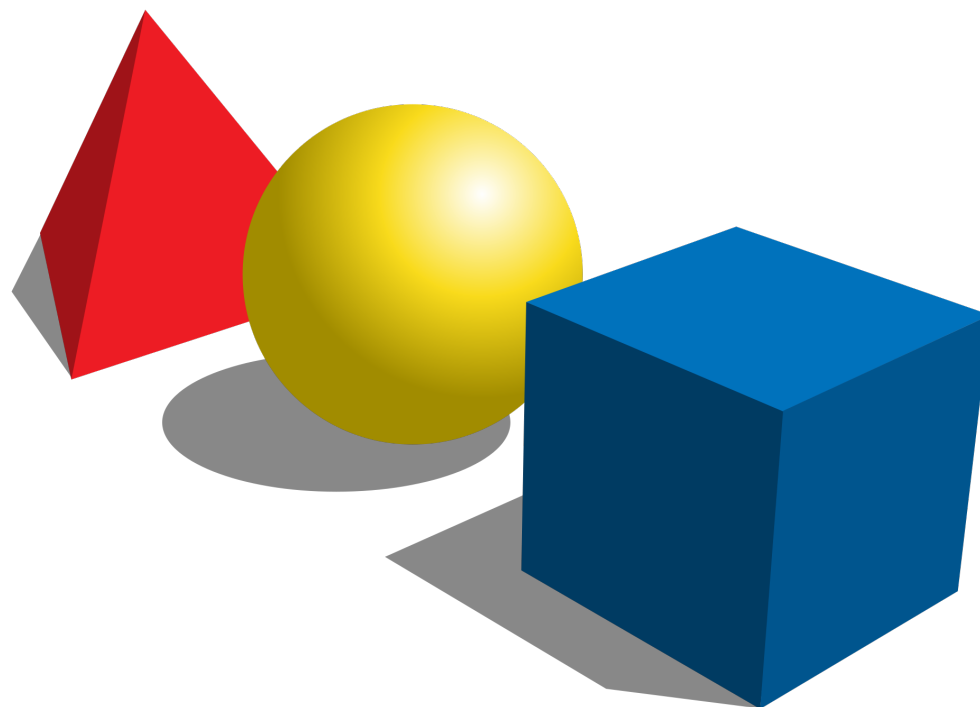
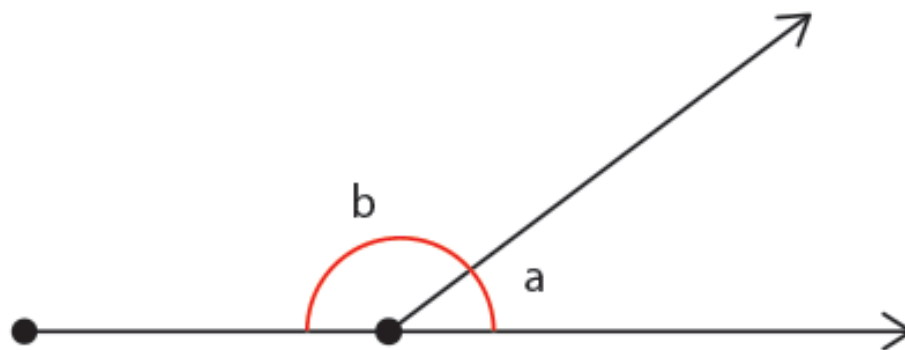
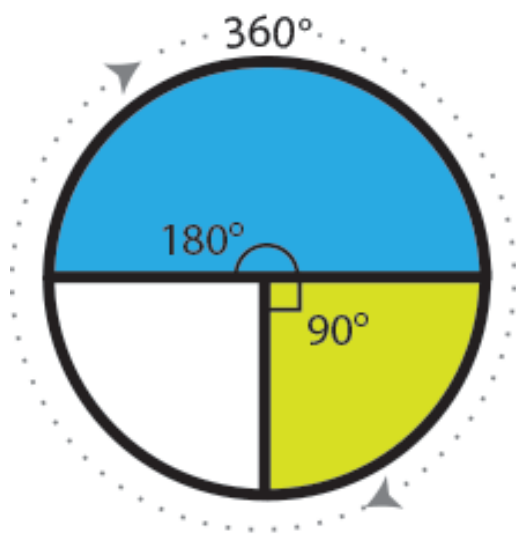
Part One - Lines



by Lisa Gilmore

Geometry
is the branch
of
mathematics

that deals
with lines,
angles, and
shapes.



This is a line.



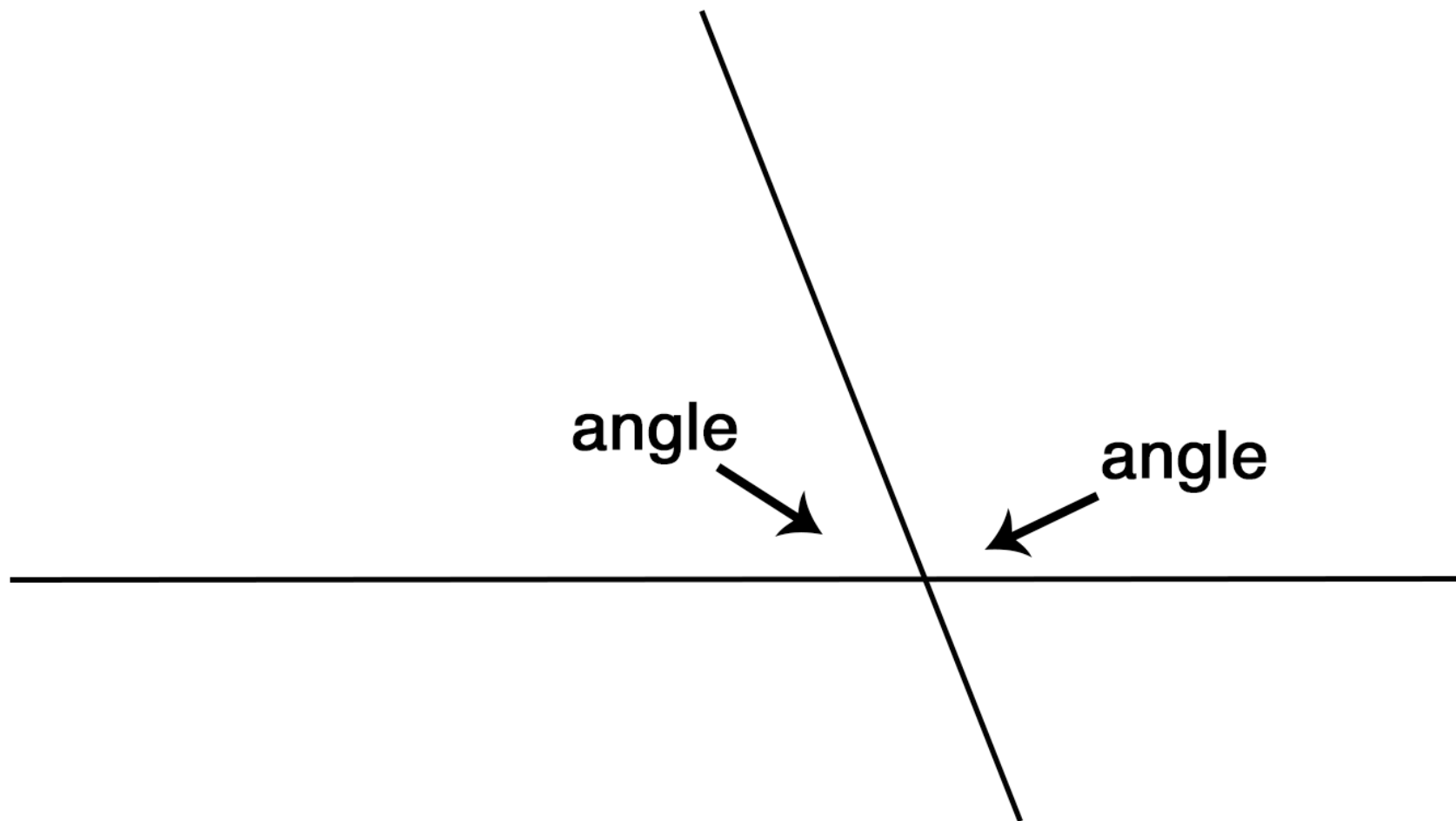
A line
has
180 degrees.

180°



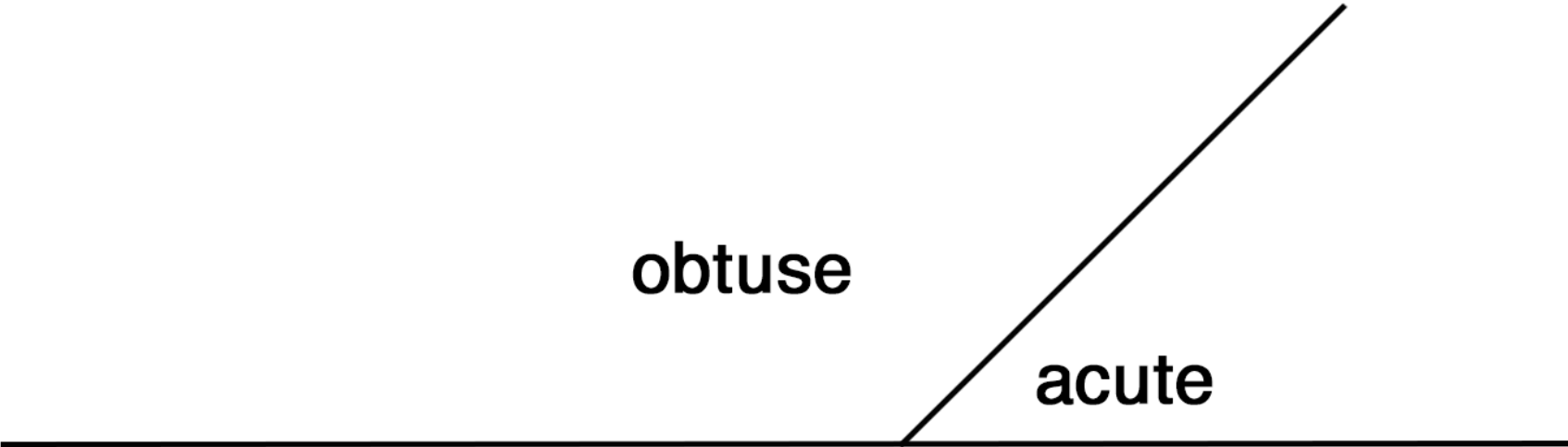
When two
lines
intersect,

they make
angles.



The larger
angle is
called obtuse,

and the
smaller angle
is called
acute.



obtuse

acute

A car with its
hood open
makes an
acute angle.

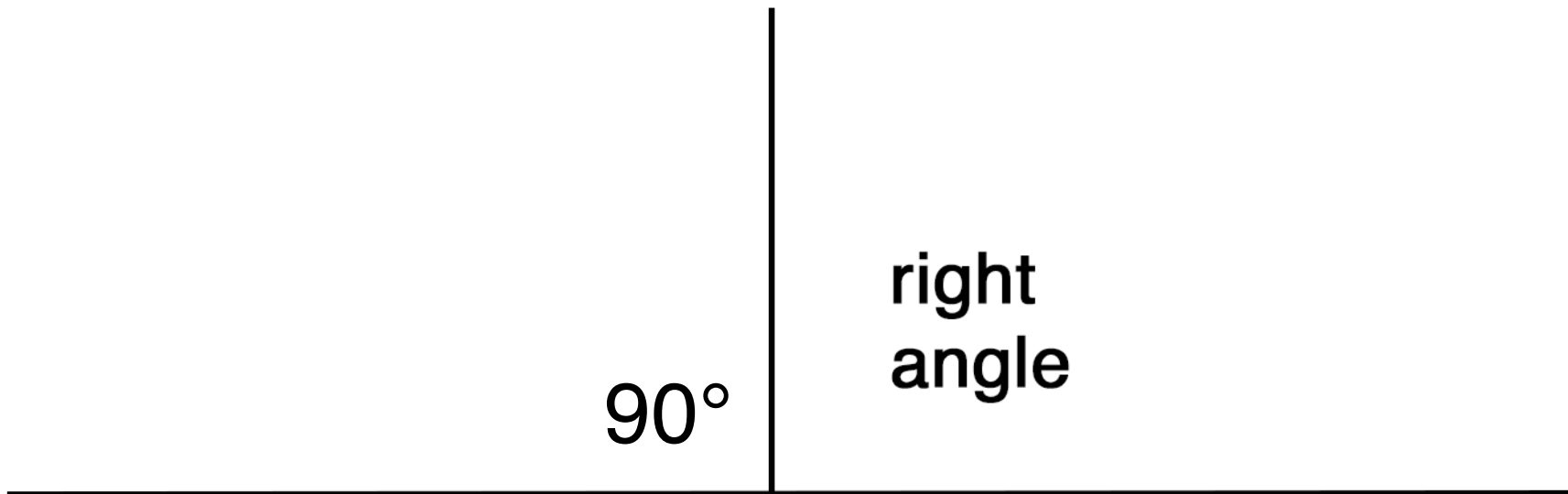
acute →



If the lines
are
perpendicular,

it is called a
right angle,

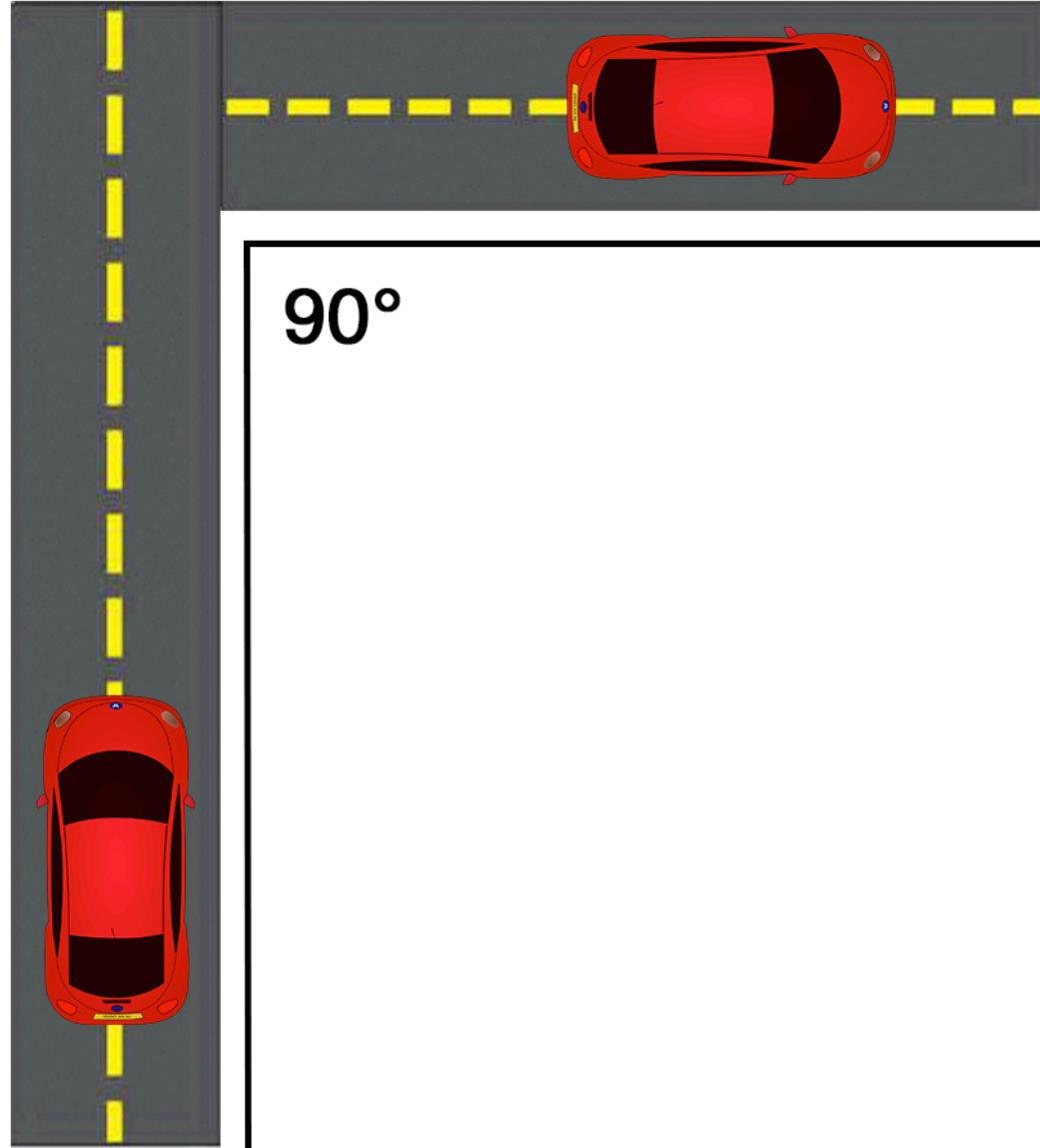
which has
90 degrees.



If a car drove
down a
street,

and turned
onto another
street,

it would make
a right angle.



The steepest
hill a
bulldozer can
drive on safely

is

45 degrees.



A 60 degree
golf club
wedge,

has an angle
of
60 degrees.



Can you find
other angles
around you?

The
End